

**44ft**  
Telehandler



## HTL 4014



### PRODUCTIVITY & PRECISION

- > Hydrostatic transmission and inching pedal
- > Rear axle lock and tilt corrector in standard
- > Simultaneous & proportional control for movement
- > Semi-automatic wheels alignment

### PERFORMANCE & COMFORT

- > Optimal movement speed
- > Exceptional lifting performances
- > High safety cab
- > Ergonomic and intuitive cab

### EASY TO USE AND MAINTAIN

- > Easy access to all components
- > Smart control 4 in 1 Joystick
- > Quick LMI (Load Management Indicator) calibration



**PLACING HEIGHT**  
13.6 M



**MAXIMUM LIFT CAPACITY**  
4000 KG

## PERFORMANCES

### HTL 4014

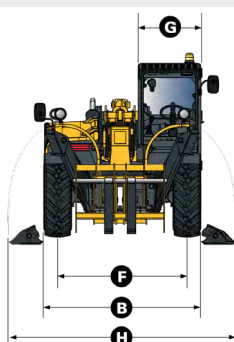
Maximum lift capacity	4000 kg
Lift capacity to full height	3000 kg
Lift capacity at full reach	1000 kg
Maximum fork height	13.6 m
Reach at maximum fork height	1.5 m
Maximum forward reach	9.8 m

## DIMENSIONS

<b>A</b> Length	6.46 m
<b>B</b> Width	2.43 m
<b>C</b> Height	2.6 m
<b>D</b> Wheelbase	2.89 m
<b>E</b> Ground clearance	50 cm
<b>F</b> Track width	1.95 m
<b>G</b> Cab width	0.96 m
<b>H</b> Overall width - stabilizers down	3.34 m
<b>I</b> Height to high boom pivot	1.75 m
<b>J</b> Approach angle	29 °
<b>K</b> Upper rotation of forks	18 °
<b>L</b> Lower rotation of forks	104 °
Turning radius (outside wheels)	4.5 m
Weight with forks	10710 kg
Tyres type	400 / 80 - 24

## ENGINE

Engine model	PERKINS TIER III / Stage 3A	KOHLER TIER IV / Stage 3B
Engine capacity	4400 cm <sup>3</sup>	3400 cm <sup>3</sup>
Engine power output	70 kW / 94 hp @ 2300 rpm	55.4 kW / 74 hp @ 2200 rpm
Engine torque	392 Nm @ 1400 rpm	375 Nm @ 1400 rpm
Transmission type	Hydrostatic transmission	
Fuel tank	130 l	130 l
Engine oil	7 l	15 l



## STANDARD EQUIPMENT

- > Hydrostatic transmission
- > Hydraulic rear axle locking
- > ROPS / FOPS cabin with heating and ventilation
- > Tilt corrector:  $\pm 10^\circ$
- > Cut-off of dangerous movements when overloaded
- > Auxiliary hydraulic system in standard
- > Simultaneous and proportional controls for boom / telescopic arm / excavation and accessories movements
- > Safety valves on hydraulic jacks
- > 4 wheel drive and steer
- > Backlighte e-tronic dashboard
- > EQSS load management system with forward and rear reverse driving cameras

## OPTIONS AND ACCESSORIES

- > Electrically hydraulic controls
- > Different types of tyres
- > Working lights
- > Rear camera or sensor
- > Metal windscreen protector
- > Air conditioning (standard in AUS / NZ)
- > Cold, hot environment or biodegradable oil
- > Buckets
- > Grabs
- > Jibs
- > Winches
- > Platforms

